

# Berker Serie 1930 / Glass / R.Classic

Berker Glass series today stands for switches that are the epitome of understated elegance. The origins of the Berker Serie 1930 can be traced back to the 1930s. The porcelain variant is made together with the famous German brand, Rosenthal.



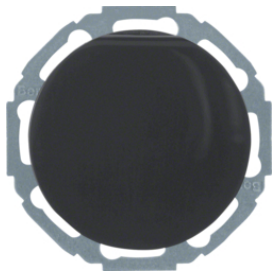
Socket outlet (SCHUKO)	2
Socket outlet (international)	3
Light controls	4
Blind control	5
Conventional electronic application module	6
Centre plate	8
Berker Serie 1930 frame	11
Berker Serie Glass frame	12
Berker R.Classic frame	13
Surface installation	15



4755

## SCHUKO

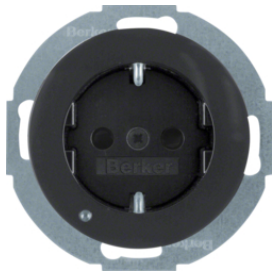
Description	P.U.	Cat ref.
CHILD SOCK.SKL GLASS PW	10	<b>4755</b>
SCHUKO socket outlet	10	<b>474520</b>
SCHUKO socket outlet	10	<b>474521</b>
CHILD SOCK.SKL GLASS BROW	10	<b>475501</b>
SKO STD M SLK R.1 SCHW	10	<b>41452045</b>
SKO STD M SLK R.1 P-W	10	<b>41452089</b>
SKO STD R.1 SCHW	10	<b>47452045</b>
SKO STD R.1 P-W	10	<b>47452089</b>
SKO STD M ERHBS R.1 SCHW	10	<b>47552045</b>
SKO STD M ERHBS R.1 P-W	10	<b>47552089</b>



47442045

## SCHUKO with hinged cover

Description	P.U.	Cat ref.
SKO STD M KLD U ERHBS R.1 SCHW	10	<b>47442045</b>
SKO STD M KLD U ERHBS R.1 P-W	10	<b>47442089</b>



41092045

## SCHUKO with LED orientation light

Description	P.U.	Cat ref.
SKO-STD M AMBEL SRBKL R.1 SCHW GLÄ	10	<b>41092045</b>
SKO-STD M AMBEL SRBKL R.1 P-W GLÄ	10	<b>41092089</b>



676579

## Socket outlet with earthing pin

Description	P.U.	Cat ref.
SOCKET B/F GLASS PW	10	<b>676579</b>
2P STD+E-ST KI GS E-BRAUN	10	<b>67657901</b>
STD 2P E-ST M STKL ERHBS R.1 P-W	10	<b>6768792089</b>
STD 2P E-ST M STKL ERHBS R.1 SCHW	10	<b>6768792045</b>
STD 2P E-ST M SLK ERHBS R.1 P-W	10	<b>6765792089</b>
STD 2P E-ST M SLK ERHBS R.1 SCHW	10	<b>6765792045</b>



1221

**Push button/lightsignal E10**

Description	P.U.	Cat ref.
LENS CLEAR GLASS-SERIES	10	<b>1221</b>
LENS CLEAR GLASS-SERIES	10	<b>1222</b>
BUTTON NEUTRAL "GLASS"	10	<b>1225</b>
BUTTON GLAS/PALAZZO/1930	10	<b>1226</b>
BUTTON GLAS/PALAZZO/1930	10	<b>1227</b>
BUTTON RED GLASS-SERIES	10	<b>1229</b>
MOM.CONT.SW./PILOT LAMP	1	<b>5104</b>
BUTTON BROWN GLASS-SERIES	10	<b>122501</b>
KNOB F.PUSHB. TRANSPARENT	10	<b>122902</b>
MOM.CONT.SW./PILOT LAMP	1	<b>510401</b>



283410

**Rotary dimmer with cover plate**

Description	P.U.	Cat ref.
Universal Rotary Dimmer Polar White	1	<b>283410</b>
Universal Rotary Dimmer Black Glossy	1	<b>283411</b>
Universal Rotary Dimmer Ext Polar White	1	<b>283510</b>
Universal Rotary Dimmer Ext Black Glossy	1	<b>283511</b>
Universal Rotary Dimmer, Black Glossy	1	<b>28342045</b>
Universal Rotary Dimmer, Polar White	1	<b>28342089</b>
Universal Rotary Dimmer Ext, Black Gloss	1	<b>28352045</b>
Universal Rotary Dimmer Ext, Polar White	1	<b>28352089</b>



3811

**Rotary switch with centre plate (for blind control)**

Description	P.U.	Cat ref.
SWITCH/SHUTTERS 1P. GLASS	1	<b>3811</b>
SWITCH/SHUTTERS 2P. GLASS	1	<b>3812</b>
SWITCH/SHUTTERS 1P. GLASS	1	<b>381101</b>
Z-ST M D-KNF F JAL-D-SCH R.1 SCHW	1	<b>38112045</b>
Z-ST M D-KNF F JAL-D-SCH R.1 P-W	1	<b>38112089</b>
Z-ST M D-KNF 2P F JAL-D-SCH R.1 SCHW	1	<b>38122045</b>
Z-ST M D-KNF 2P F JAL-D-SCH R.1 P-W	1	<b>38122089</b>



**Blind time switch**

Description	P.U.	Cat ref.
HBNet ZSU JAL R.1 SCHWARZ GLÄ	1	<b>85741131</b>
HBNet ZSU JAL R.1 P-W GLÄ	1	<b>85741139</b>

85741131



**Motion detector (1.1 m)**

Description	P.U.	Cat ref.
HBNet WÄCH STANDARD 1,1m R.1 SCHWARZ GLÄ	1	<b>85341131</b>
HBNet WÄCH STANDARD 1,1m R.1 P-W GLÄ	1	<b>85341139</b>

85341131



**Motion detector (2.2 m)**

Description	P.U.	Cat ref.
HBNet WÄCH STAND 2,2 M R.1 SCHW GLÄ	1	<b>85342131</b>
HBNet WÄCH STAND 2,2 M R.1 P-W GLÄ	1	<b>85342139</b>

85342131



**Motion detector comfort (1.1 m)**

Description	P.U.	Cat ref.
IR motion det. comf 1.1m R.1/R.3, black	1	<b>85341231</b>
IR motion det. comf 1.1m R.1/R.3, pw	1	<b>85341239</b>

85341231



**Motion detector comfort (2.2 m)**

Description	P.U.	Cat ref.
IR motion det. comf 2.2m R.1/R.3, black	1	<b>85342231</b>
IR motion det. comf 2.2m R.1/R.3, pw	1	<b>85342239</b>

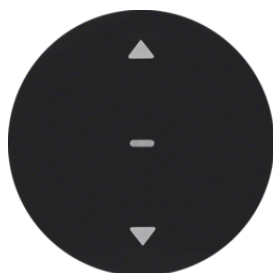
85342231



## push button 1-gang for light control

Description	P.U.	Cat ref.
HBNet Taste1k Licht R.1 SCHW GLÄ	1	<b>85141131</b>
HBNet Taste1k Licht R.1 P-W GLÄ	1	<b>85141139</b>

85141131

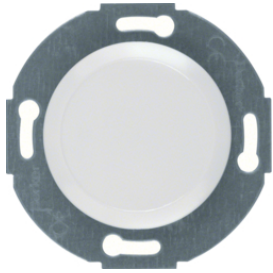


## push button for blind control

Description	P.U.	Cat ref.
HBNet TA 1k JAL R.1 SCHWARZ GLÄ	1	<b>85241131</b>
HBNet TA 1k JAL R.1 P-WEIß GLÄ	1	<b>85241139</b>

85241131





100920

**Blank plate**

Description	P.U.	Cat ref.
BLANK PLATE 1930 POLAR W.	20	<b>100920</b>
BLANK PLATE 1930 BROWN	20	<b>100921</b>



1037

**centre plate for cable outlet**

Description	P.U.	Cat ref.
CENT.PL.TELSOCKET/GLASS/W	10	<b>1037</b>
CENT.PL.TELSOCKET/GLASS/B	10	<b>103701</b>



103920

**For aerial socket outlet**

Description	P.U.	Cat ref.
CENTRE PLATE 1930 PW	10	<b>103920</b>
CENTRE PLATE 1930 BROWN	10	<b>103921</b>
CENT.PL.F.ANTENNA SOCKET	10	<b>106420</b>
CENT.PL.F.ANTENNA SOCKET	10	<b>106421</b>



1407

**For FCC (RJ45) outlets**

Description	P.U.	Cat ref.
CENTRE PL.GL/PAL.1930 PW	10	<b>1407</b>
CENTRE PL.GL/PAL/1930 PW	10	<b>1409</b>
CENT.PL.FOR FCC SOCKET	10	<b>140701</b>
CENTRE PL.GL/PAL/1930 BLA	10	<b>140901</b>



11962035

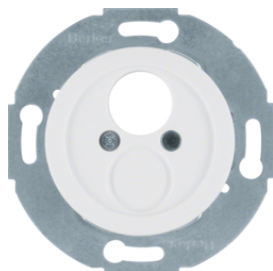
**For loudspeaker outlet**

Description	P.U.	Cat ref.
Z-ST F LSP-STD RD 1F R.1 SCHW	10	<b>11962035</b>
Z-ST F LSP-STD RD 1F R.1 P-W	10	<b>11962079</b>

**For rotary dimmer incl. setting knob**

Description	P.U.	Cat ref.
Z-ST M KNF F DZS R.1 SCHW	10	<b>11372035</b>
Z-ST M KNF F DZS R.1 P-W	10	<b>11372079</b>

11372035

**Miniature connector**

Description	P.U.	Cat ref.
Miniature connector insert with centre p	10	<b>450820</b>

450820

**R.CLASSIC - Cover with toggle for rotary switch/push button**

Description	P.U.	Cat ref.
Cover Plate/Toggle Stainless Steel/Black	1	<b>10012004</b>
Cover Plate/Toggle Stainless/Polar White	1	<b>10012014</b>
Cover Plate with Toggle Black Glossy	1	<b>10012045</b>
Cover Plate with Toggle Glass Black	1	<b>10012055</b>
Cover Plate/Toggle Aluminium/Polar White	1	<b>10012074</b>
Cover Plate/Toggle, Polar White Glass	1	<b>10012083</b>
Cover Plate/Toggle Aluminium/Black	1	<b>10012084</b>
Cover Plate/Toggle Polar White Glossy	1	<b>10012089</b>

10012004

**Rotary knob**

Description	P.U.	Cat ref.
Brass toggle - Serie Glas brass	1	<b>1812</b>
Chr tog, Serie Glas, bra, chr-pltd	1	<b>181201</b>

1812

**Serie 1930/Glass - with toggle for rotary switch/push button**

Description	P.U.	Cat ref.
C/p w/toggle for rotary&spring-return PB	1	<b>1647</b>
Centre Plate with Toggle, Black Glossy	1	<b>164701</b>
C/p w/toggle for rotary&spring-return PB	1	<b>164765</b>
C/p w/toggle for rotary&spring-return PB	1	<b>164769</b>

1647

**with TAE output**

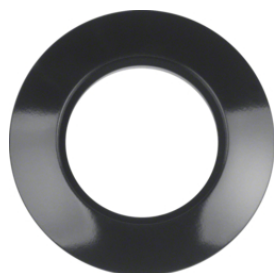
Description	P.U.	Cat ref.
CENT.PL.TELECOMM.GLASS WH	10	<b>1040</b>
CENT.PL.TELECOMM.GLASS BR	10	<b>104001</b>

1040

**polar white, glossy**

Description	P.U.	Cat ref.
1930 Frame 1-gang, Polar White Glossy	10	<b>138109</b>
RA 1F F ELEKTRO-EINS S1930 P-W	10	<b>138209</b>
1930 Frame 2-gang, Polar White Glossy	2	<b>138129</b>
1930 Frame 3-gang, Polar White Glossy	2	<b>138139</b>
1930 End Frame, Polar White Glossy	10	<b>138149</b>
1930 Centre Frame Polar White Glossy	10	<b>138159</b>

138109

**black glossy**

Description	P.U.	Cat ref.
1930 Frame 1-gang, Black Glossy	10	<b>138101</b>
RA 1F F ELEKTRO-EINS S1930 SCHW	10	<b>138201</b>
1930 Frame 2-gang, Black Glossy	2	<b>138121</b>
1930 End Frame, Black Glossy	10	<b>138141</b>
1930 Centre Frame Black Glossy	10	<b>138151</b>

138101

**polar white, glossy, porcelain**

Description	P.U.	Cat ref.
1930 Porcelain Frame Polar White Glossy	1	<b>138169</b>

138169

**black glossy, porcelain**

Description	P.U.	Cat ref.
1930 Porcelain Frame, Black Glossy	1	<b>138165</b>

138165



## 1-gang

Description	P.U.	Cat ref.
Serie Glas Frame, 1-gang Clear Glossy	10	<b>1091</b>
Serie Glas End Frame, Clear Glossy	10	<b>109200</b>
Serie Glas Centre Frame, Clear Glossy	10	<b>109300</b>

1091



## 1-gang cover plate for rotary switch

Description	P.U.	Cat ref.
Coverplate for rotary switch clear glass	10	<b>1090</b>

1090



## 2-gang

Description	P.U.	Cat ref.
Serie Glas Frame, 2-gang Clear Glossy	2	<b>1102</b>

1102



## Centre cover plate for rotary switch

Description	P.U.	Cat ref.
Glass Centre Cover Plate Rotary Sw Clear	10	<b>1095</b>

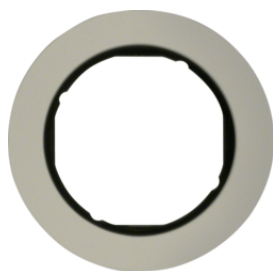
1095



## End cover plate for rotary switch

Description	P.U.	Cat ref.
Glass End Cover Plate, Rotary Sw Clear	10	<b>1094</b>

1094

**aluminum / black**

Description	P.U.	Cat ref.
Frame 1-gang Aluminium/Black	10	<b>10112084</b>
Frame 2-gang Aluminium/Black	10	<b>10122084</b>
Frame 3-gang Aluminium/Black	10	<b>10132084</b>

10112084

**aluminum / polar white**

Description	P.U.	Cat ref.
Frame 1-gang Aluminium/Polar White	10	<b>10112074</b>
Frame 2-gang Aluminium/Polar White	10	<b>10122074</b>
Frame 3-gang Aluminium/Polar White	10	<b>10132074</b>

10112074

**glass, black**

Description	P.U.	Cat ref.
Frame 1-gang Glass Black (R.Classic)	10	<b>10112016</b>
Frame 2-gang Glass Black (R.Classic)	5	<b>10122016</b>
Frame 3-gang Glass Black (R.Classic)	5	<b>10132016</b>

10112016

**glass, polar white**

Description	P.U.	Cat ref.
Frame 1-gang Glass Polar White	10	<b>10112009</b>
Frame 2-gang Glass Polar White	5	<b>10122009</b>
Frame 3-gang Glass Polar White	5	<b>10132009</b>

10112009

**plastic, black**

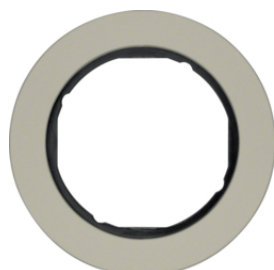
Description	P.U.	Cat ref.
Frame 1-gang Black Glossy (R.Classic)	10	<b>10112045</b>
Frame 2-gang Black Glossy (R.Classic)	2	<b>10122045</b>
Frame 3-gang Black Glossy (R.Classic)	2	<b>10132045</b>

10112045

**plastic, polar white**

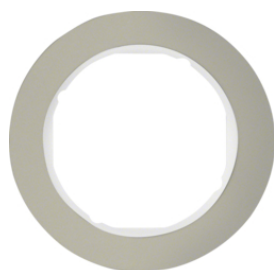
Description	P.U.	Cat ref.
Frame 1-gang Polar White Glossy	10	<b>10112089</b>
Frame 2-gang Polar White Glossy	2	<b>10122089</b>
Frame 3-gang Polar White Glossy	2	<b>10132089</b>

10112089

**stainless steel / black**

Description	P.U.	Cat ref.
Frame 1-gang Stainless Steel/Black	10	<b>10112004</b>
Frame 2-gang Stainless Steel/Black	10	<b>10122004</b>
Frame 3-gang Stainless Steel/Black	10	<b>10132004</b>

10112004

**stainless steel / polar white**

Description	P.U.	Cat ref.
Frame 1-gang Stainless Steel/Polar White	10	<b>10112014</b>
Frame 2-gang Stainless Steel/Polar White	10	<b>10122014</b>
Frame 3-gang Stainless Steel/Polar White	10	<b>10132014</b>

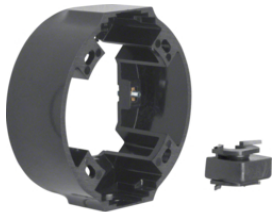
10112014



**Connector**

Description	P.U.	Cat ref.
CONNECTION PIECE 1930 BLA	10	<b>182305</b>
CONNECTION PIECE 1930 PW	10	<b>182309</b>

182305



**Serie 1930 - surface mounting frame**

Description	P.U.	Cat ref.
Surface Mount Frame, Black Glossy	10	<b>100101</b>
Surface Mount Frame, Polar White Glossy	10	<b>100109</b>

100101