

41236086

SCHUKO

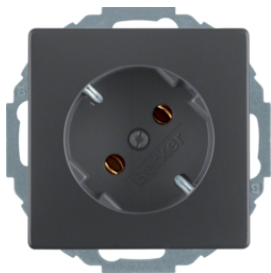
Description	P.U.	Cat ref.
SKO STD M SRBKL U ERHBS Q1 ANTH	10	41236086
SKO STD M SRBKL U ERHBS Q1 ALU LACK	10	41236084
SKO STD M SRBKL Q1 ANTH	10	41436086
SKO STD M SRBKL Q1 ALU LACK	10	41436084
SKO STD M STKL U ERHBS Q1 ANTH	10	47236086
SCHUKO S/outlet - Q.1 PW	10	47236089
SKO STD M STKL U ERHBS Q1 ALU LACK	10	47236084
SKO STD M STKL Q1 ANTH	10	47436086
SKO STD M STKL Q1 P-W	10	47436089
SKO STD M STKL Q1 ALU LACK	10	47436084



47206086

SCHUKO 2-gang combi with frame

Description	P.U.	Cat ref.
SKO STD KOMBI 2F M RA Q1 ANTH	5	47206086
SKO STD KOMBI 2F M RA Q1 ALU LACK	5	47206084



47276086

SCHUKO 45°

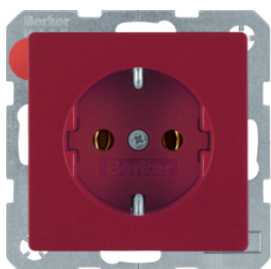
Description	P.U.	Cat ref.
SKO STD 45° M STKL Q1 ANTH	10	47276086
SKO STD 45° M STKL Q1 P-W	10	47276089
SKO STD 45° M STKL Q1 ALU LACK	10	47276084



47296086

SCHUKO double outlet with cover plate

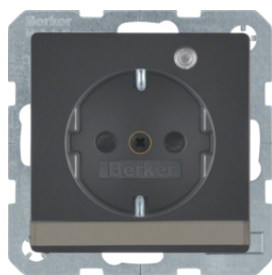
Description	P.U.	Cat ref.
SKO DP-STD M ERHBS U STKL Q1 ANTH	10	47296086
SKO DP-STD M ERHBS U STKL Q1 ALU LACK	10	47296084



47436012

SCHUKO for special applications

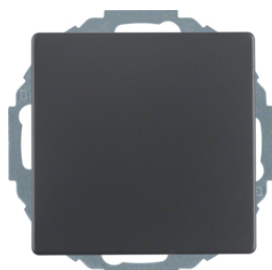
Description	P.U.	Cat ref.
SKO STD M STKL Q1 ROT	10	47436012



41106086

SCHUKO with control LED and labeling field

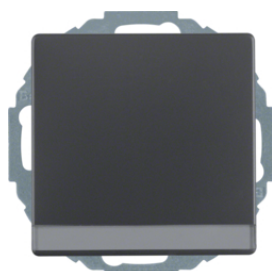
Description	P.U.	Cat ref.
SKO-STD M LED ERHBS SFD Q1 ANTH	10	41106086
SKO STD M LED ERHBS SFD Q1 ALU LACK	10	41106084



47446086

SCHUKO with hinged cover

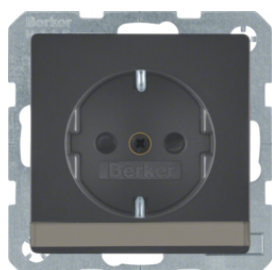
Description	P.U.	Cat ref.
SCHUKO so w hinged cover EHCP Q.x anthra	10	47446086
SCHUKO so w hinged cover EHCP Q.x alu	10	47446084
SCHUKO so hinged cover Q.x ant. velvety	10	47516066
SCHUKO so hinged cover Q.x alu velvety	10	47516064
SCHUKO so hinged cover EHCP Q.x anthra.	10	47516076
SCHUKO so hinged cover EHCP Q.x alu	10	47516074
SCHUKO so hinged cover EHCP Q.x anthra.	10	47516086
SCHUKO so hinged cover EHCP Q.x pw.	10	47516089
SCHUKO so hinged cover EHCP Q.x alu velv	10	47516084



47466086

SCHUKO with hinged cover and labeling field

Description	P.U.	Cat ref.
SCHUKO so w hinged cover EHCP Q.x anthra	10	47466086
SCHUKO so w hinged cover EHCP Q.x pol wh	10	47466089
SCHUKO so w hinged cover EHCP Q.x alu	10	47466084
SCHUKO so hin. cover LF EHCP Q.x anthra.	10	47526086
SCHUKO so hin. cover LF EHCP Q.x alu	10	47526084



41496086

SCHUKO with labeling field

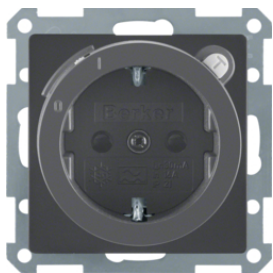
Description	P.U.	Cat ref.
SKO STD M BSF, ERHBS U SRBKL Q1 ANTH	10	41496086
SKO STD M BSF, ERHBS U SRBKL Q1 P-W	10	41496089
SKO STD M BSF, ERHBS U SRBKL Q1 ALU LACK	10	41496084
SKO STD M BSF, ERHBS U STKL Q1 ANTH	10	47496086
SKO STD M BSF, ERHBS U STKL Q1 ALU LACK	10	47496084
SKO STD M BSF U STKL Q1 ANTH	10	47506086
SKO STD M BSF U STKL Q1 ALU LACK	10	47506084



41096086

SCHUKO with LED orientation light

Description	P.U.	Cat ref.
SKO-STD M AMBEL SRBKL M ERHBS Q1 ANTH	10	41096086
SKO-STD M AMBEL SRBKL Q1 P-W HGL	10	41096089
SKO STD M AMBEL SRBKL Q1 ALU LACK	10	41096084



47086086

SCHUKO with residual current circuit-breaker

Description	P.U.	Cat ref.
SKO STD M FI-SZ-SCH Q1 ANTH	1	47086086
SKO STD M FI-SZ-SCH Q1 ALU LACK	1	47086084