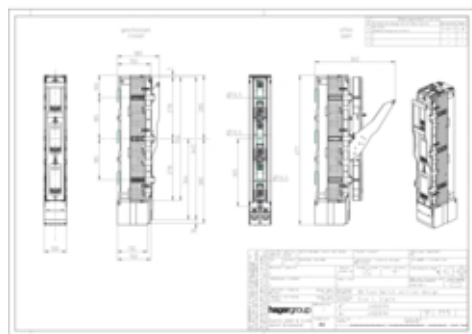




Fuse switch vert. size 1 3p M12

LVSG1CPX



Architecture

Number of poles	3 P
Type of pole	3 P

Main electrical features

Frequency	50/60 Hz
Rated operational voltage Ue	0/690 V

Voltage

Rated insulation voltage	1000 V
Overtoltage category according to IEC 60947-1 2.5.60 IV-supply system level (feed) Table 1	
Rated impulse withstand voltage	12 kV

Electric current

Acceptable current rating with AC22 category B	250 A
Acceptable current rating with AC23 category B	250 A
Cut off current	120 kA
Rated current for Ue=400V AC according to IEC 61439-1 5.3.2	250 A
Rated current for Ue=500V AC according to IEC 61439-1 5.3.2	250 A
Rated current for Ue=690V AC according to IEC 61439-1 5.3.2	250 A
Rated short-time withstand current 1s	10 kA
Rated conditional short-circuit current for Ue=400V IEC 61439-1 3.8.10.4	120 kA
Rated conditional short-circuit current for Ue=500V IEC 61439-1 3.8.10.4	120 kA
Rated conditional short-circuit current for Ue=690V IEC 61439-1 3.8.10.4	100 kA
Fuse-links test rated cond. short-circuit current Ue=400V IEC 61439-1 3.8.10.4	250 A
Fuse-links test rated cond. short-circuit current Ue=500V IEC 61439-1 3.8.10.4	250 A
Fuse-links test rated cond. short-circuit current Ue=690V IEC 61439-1 3.8.10.4	200 A
Conv. free air therm.current w/fuse-links and std. cross sect. IEC60947-1 4.3.2.1	250 A

Technical Properties

Conventional free air thermal current with Trennmesser and std. cross section	320 A
---	-------

Electric current / temperature

Rating current 40°C	250 A
Rating current 45°C	237,5 A
Rating current 50°C	225 A
Rating current 55°C	212,5 A
Rating current 60°C	200 A
Rating current 65°C	187,5 A
Rating current 70°C	175 A

Fuse

Fuse Size	NH1
-----------	-----

Power

Loss power at full load	~ 96 W
Maximum Power loss of the Fuse-Link installed in device	23 W
Total power loss under IN	27 W
Dissipated energy in cable	50,44 W

Endurance

Electric endurance in number of cycles	200
Total service life (mechanical and electrical endurance) IEC 60947-3 Table 4	1600
Number of mechanical operations	1400

Materials

Copper weight of the product	1699 g
Silver weight of the product	2,18 g

Dimensions

Depth of installed product	190 mm
Height of installed product	125 mm
Length	665 mm
Width of installed product	100 mm
Entre-axe between bars of busbars	185 mm

Installation, mounting

Tightening torque	32Nm
Torque at mounting on busbar	32 Nm

Connection

Type of connection	Screw connection
--------------------	------------------

Standards

Operation of switching devices according to IEC 60947-1 2.4	depending manual operation (of a mechanical switching device)
Rated duties according to IEC 60947-1 4.3.4	Continuous operation
Standard cross section according to IEC 60947-1 Tables 9 and 10	120 mm ²

Technical Properties

Utilisation category for Ue=400V AC according to IEC 60947-3 Table 5 AC-23B

Utilisation category for Ue=500V AC according to IEC 60947-3 Table 5 AC-22B

Utilisation category for Ue=690V AC according to IEC 60947-3 Table 5 AC-21B

European directive WEEE concerned

Safety

Protection index IP IP2X

Use conditions

Degree of pollution according to IEC 60664 / IEC 60947-2 3

Storage temperature -40 to 70 °C

temperatur

Max. temperature connected below with Fuse-Links IEC 60947-1 Table 2 56 K

Max. temperature connected below with Solid-links IEC 60947-1 Table 2 65 K

Max. Busbar temperature with Fuse-Links IEC 60947-1 Table 2 42 K

Max. Busbar temperature with Solid-links IEC 60947-1 Table 2 48 K

Weight

Weight 4,51 kg