

Berker Integro

A contemporary solution for every installation environment - straight-line contours and angular corners, coupled with arched surface geometry. In this manner Integro Flow ensures a harmonious transition to the operating section for any installation surface. The ideal product for virtually any interior style.



Socket outlets	2
Connecting devices 12V	3
Switches / push buttons (module inserts)	4
Rotary dimmer 12V DC	6
Blind series push-button with imprinted symbol arrow (FLOW / PURE ranges)	7
Communication & multimedia outlets	8
Blank plates	10
Berker INTEGRO FLOW	11
Berker INTEGRO CLASSIC	14
Berker INTEGRO PURE	15
Accessories	17



9418505

Socket outlet (SCHUKO)

Description	P.U.	Cat ref.
SOCKET OUTLET BLACK	10	9418505
SOCKET OUTLET B.MOBIL BRO	200	841852501
SOCKET OUTLET B.MOBIL PW	200	841852502
SOCKET OUTLET B.MOBIL ANT	200	841852505
SOCKET OUTLET B.MOBIL GRE	200	841852506
SOCKET OUTLET B.MOBIL PW	200	841952502
SOCKET OUTLET B.MOBIL BRO	10	941852501
SOCKET OUTLET B.MOBIL PW	10	941852502
SCHUKO-SOCKET OUTLET BERKER B.MOBIL ANT	10	941852505
SOCKET OUTLET B.MOBIL GRE	10	941852506
SOCKET OUTLET B.MOBIL PW	10	941952502
SOCKET OUTLET B.MOBIL ANT	10	941952505
SCHUKO-SOCKET BLACK	10	947782505
SCHUKO-SOCKET GREY	10	947782506
SCHUKO-SOCKET PW	10	947782502
SCHUKO-SOCKET BLACK	10	947792505



961852505

Socket outlet (international)

Description	P.U.	Cat ref.
SOCKET F B.MOBIL ANTHRACI	10	961852505
SOCKET F B.MOBIL GREY	10	961852506
SOCKET F B.MOBIL PW	10	961852502



Plug 12V

Description	P.U.	Cat ref.
Integro Insert-Plug 12V Black Matt	1	4637

4637



Power socket 12V

Description	P.U.	Cat ref.
POWER SOCK.B.MOBIL ANTHRA	10	945702505

945702505

**On/Off switch inserts (FLOW / PURE ranges)**

Description	P.U.	Cat ref.
Change-over sw, Flow/Pure, anth m	200	836562505
Change-over sw, Flow/Pure, grey glossy	200	836562507
Change-over sw, Flow/Pure, pol wh gl	200	836562509
On/off sw, Flow/Pure, polar white glossy	10	936512509
On/off sw, Flow/Pure, chr m, galvanised	10	936512528

836562505

**Change-over switch (FLOW / PURE ranges)**

Description	P.U.	Cat ref.
Change-over sw, Flow/Pure, brown matt	10	936562501
Change-over sw, Flow/Pure, anth m	10	936562505
Change-over sw, Flow/Pure, grey glossy	10	936562507
Change-over sw, Flow/Pure, black glossy	10	936562510
Ch-ov sw, Flow/Pure, gr blk, silk m, la	10	936562545
Change-over sw, Flow/Pure, chrome m, lac	10	936562568
Change-over sw, Flow/Pure, chr gl, galv	10	936562518
Change-over sw, Flow/Pure, chr m, galv	10	936562528
Change-over sw, Flow/Pure, st st m, lac	10	936562524
Change-over sw, Flow/Pure, gold gl, galv	10	936562538

936562501

**Intermediate switch (FLOW / PURE ranges)**

Description	P.U.	Cat ref.
Intermediate sw, Flow/Pure, chr m, galv	10	936572528

936572528

**2-Rockers switch (FLOW / PURE ranges)**

Description	P.U.	Cat ref.
Ser sw, com input term, Flow/Pure, br m	10	936552501
Ser sw, com input Flow/Pure, anth m	10	936552505
Ser sw, com input Flow/Pure, grey gl	10	936552507
Ser sw, com input Flow/Pure, pol wh gl	10	936552509
Ser sw, com input Flow/Pure, black gl	10	936552510
Ser sw, com inp Flow/Pure, gr blk si m	10	936552545
Ser sw, com input Flow/Pure, chr m, la	10	936552568
Ser sw, com input Flow/Pure, chr gl, gal	10	936552518
Ser sw, com input Flow/Pure, chr m, galv	10	936552528

936552501

**Push-button NO contact (FLOW / PURE ranges)**

Description	P.U.	Cat ref.
P-b, NO contact, , Flow/Pure, anth m	10	936712505
P-b, NO contact, , Flow/Pure, pol wh gl	10	936712509
P-b, NO contact, , Flow/Pure, black gl	10	936712510
P-b, NO con, Flow/Pure, gran blk silk	10	936712545
P-b, NO contact, , Flow/Pure, chr m, lacq	10	936712568
P-b, NO contact, Flow/Pure, chr gl, galv	10	936712518
P-b, NO contact, , Flow/Pure, chr m, galv	10	936712528

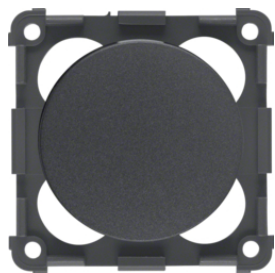
936712505



936752505

Series push-button, 2 NO contacts (FLOW / PURE ranges)

Description	P.U.	Cat ref.
Ser P-b, 2 NO cont, Flow/Pure, anth m	10	936752505
Ser P-b, 2 NO cont, Flow/Pure, grey gl	10	936752507
Ser P-b, 2 NO cont, Flow/Pure, pol wh gl	10	936752509
Ser P-b, 2 NO co, Flow/Pure, chr m, lac	10	936752568
Ser p-b, 2 NO co, Flow/Pure, chr gl, gal	10	936752518
Ser P-b, 2 NO co, Flow/Pure, chr m, gal	10	936752508



928762505

Rotary dimmer with setting knob (FLOW / PURE ranges)

Description	P.U.	Cat ref.
Rotary Dim 12V= with Set, Antracite Matt	1	928762505
Rotary Dim 12V= with Set, Black Glossy	1	928762510
Rotary Dim 12V= with Set, Polar White	1	928762509



936532505

Blind series push-button with imprinted symbol arrow (FLOW / PURE ranges)

Description	P.U.	Cat ref.
Bld ser p-b, Flow/Pure, anth m	10	936532505



Aerial connector box TV

Description	P.U.	Cat ref.
Aerial Connector Box TV, Brown Matt	10	945112511
Aerial Connector Box TV, Anthracite Matt	10	945112515

945112511



Aerial connector box SAT

Description	P.U.	Cat ref.
Aerial Connector Box SAT, Anthracite Mat	10	945192505
Aerial Connector Box SAT, Polar White	10	945192502

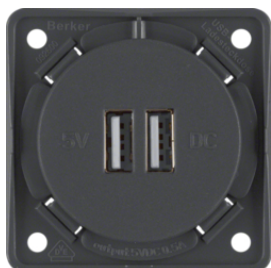
945192505



Aerial connector box radio/SAT

Description	P.U.	Cat ref.
Aerial Connector Radio/SAT, Anthracite	10	945602505
Aerial Connector Box Radio/SAT, White	10	945602502

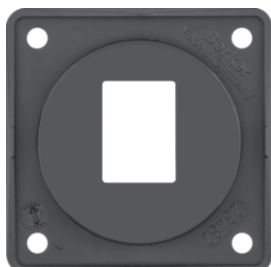
945602505



USB charging socket (230V)

Description	P.U.	Cat ref.
Integro 230V USB Socket Anthracite Matt	1	926002505
Integro 230V USB Socket Polar White Matt	1	926002509

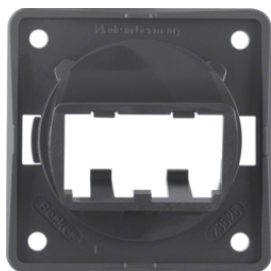
926002505



Supporting plate 1gang for AMP modular jacks

Description	P.U.	Cat ref.
Plate, Amp Module Jacks, 1-G, Anthracite	10	945572505
Plate, Amp Module Jacks, 1-G, P-W Glossy	10	945572509

945572505



945592505

Supporting plate 2gang for MINI-COM modules

Description	P.U.	Cat ref.
Plate, 2 Mini-Com Mods Anthracite Glossy	10	945592505
Plate, 2 Mini-Com Mods Grey Glossy	10	945592507
Plate, 2 Mini-Com Mods Polar White Gloss	10	945592509



1985

Mini-Jacks (8 pole)

Description	P.U.	Cat ref.
Mini Jack, 8-Pole RJ45, Cat.6 shielded	1	1985
Mini Jack, 8-Pole RJ45, Cat.5e shielded	1	1984
Mini Jack, 8-Pole RJ45, Cat.3, Black	1	1980
Blank Module Polar White 1-Gang	1	1990



945162505

Blank plates

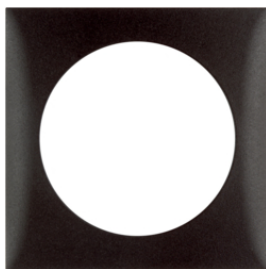
Description	P.U.	Cat ref.
Integro Flow, Blind Plug Anthracite Matt	10	945162505
Blind Plug Polar White Glossy (integro)	10	945162509



818262519

Frame, polar white glossy

Description	P.U.	Cat ref.
FRAME 2P PW B.MOBIL	100	818262519
FRAME 1G PW B.MOBIL	200	818272509
Integro Frame, 3-Gang Polar White Glossy	2	918192519
Integro Frame, 2-Gang Polar White Glossy	2	918262519
Integro Frame, 1-Gang Polar White Glossy	10	918272509
Frame w. hing. cov., Flow/Pure, pol. w.	10	918282509



818272501

Frame, brown matt

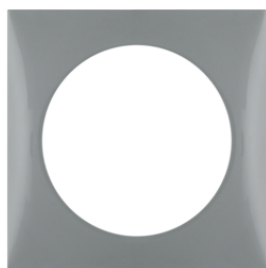
Description	P.U.	Cat ref.
FRAME 1G BROWN B.MOBIL	200	818272501
HINGED COVER BROWN B.MOBI	200	818282501
Integro Flow Frame, 2-Gang Brown Matt	2	918262511
Integro Flow Frame, 1-Gang Brown Matt	10	918272501
Frame, 1-Gang, Hinged Cover, Brown Matt	10	918282501



0818272505

Frame, anthracite matt

Description	P.U.	Cat ref.
FRAME 1G ANTHR.B.MOBIL	200	818272505
HINGED COVER ANTHRACITEBM	200	818282505
Integro Flow Frame 3-Gang Anthracite Mat	2	918192515
Integro Flow Frame 2-Gang Anthracite Mat	2	918262515
Integro Frame 1-Gang Anthracite Matt	10	918272505
Frame 1Gang Hinged Cover Anthracite Matt	10	918282505



818272507

Frame, grey glossy

Description	P.U.	Cat ref.
FRAME 1G GREY B.MOBIL	200	818272507
ITG RAHMEN MIT KLAPPDECKEL 1FACH G..	200	818282507
Integro Flow Frame, 3-Gang Grey Glossy	2	918192507
Integro Flow Frame, 2-Gang Grey Glossy	2	918262507
Integro Flow Frame, 1-Gang Grey Glossy	10	918272507
Frame, 1-Gang Hinged Cover, Grey Glossy	10	918282507



918272510

Frame, black glossy

Description	P.U.	Cat ref.
Integro Flow Frame, 1-Gang Black Glossy	10	918272510
Frame w. hing. cover, Flow/Pure, bl. gl.	10	918282510



918192518

Frame, chrome glossy galvanised

Description	P.U.	Cat ref.
RA 3F ITG CHROM HGL	2	918192518
FRAME 1G CHROME B.MOBIL	10	918272518
FRAME 2G CHROME B.MOBIL	2	918262518



918262528

Frame, chrome matt galvanised

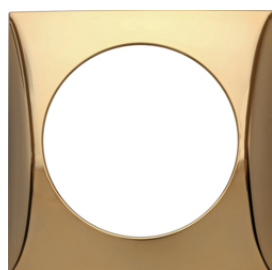
Description	P.U.	Cat ref.
FRAME 2G CHROME B.MOBIL	2	918262528
FRAME 1G CHROME B.MOBIL	10	918272528



918192568

Frame, chrome matt, lacquered

Description	P.U.	Cat ref.
Integro Frame 3-Gang Chrome Matt Lacquer	2	918192568



918272538

Frame, gold glossy

Description	P.U.	Cat ref.
FRAME 1G GOLD B.MOBIL	10	918272538



918192524

Frame, stainless steel matt, lacquered

Description	P.U.	Cat ref.
Integro Frame, 3-Gang Stainless Steel	2	918192524
Integro Frame, 2-Gang Stainless Steel	2	918262524
Integro Frame, 1-Gang Stainless Steel	10	918272524



918192576

Frame, red glossy

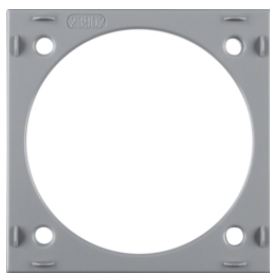
Description	P.U.	Cat ref.
FRAME 2G PW B.MOBIL	2	918192576
FRAME 2G PW B.MOBIL	2	918262576
FRAME 1G BROWN B.MOBIL	10	918272576



911512501

Surface mounted housing

Description	P.U.	Cat ref.
SURF.MOUNT.HOUS.B.M.BROWN	10	911512501
SURF.MOUNT.HOUS.B.M.ANTHR	10	911512505
SURF.MOUNT.HOUS.B.M.GREY	10	911512507
SURF.MOUNT.HOUS.B.MOBILPW	10	911522529



918252506

Surface mounted spacer ring

Description	P.U.	Cat ref.
Integro, Surface-Mount Spacer Grey Gloss	10	918252506

**Frame, chrome matt galvanised**

Description

FRAME 1GANG MAT CHROME

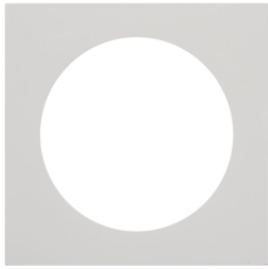
P.U.

10

Cat ref.

9182728

9182728



919752509

Frame, polar white glossy

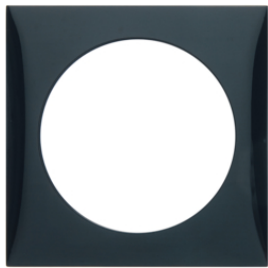
Description	P.U.	Cat ref.
Frame 1gang, Integro Pure, pol. w. gl.	10	919752509
Frame 2gang, Integro Pure, pol. w. gl.	2	919762509
Frame w. hing. cov., Flow/Pure, pol. w.	10	918282509



919752510

Frame, black glossy

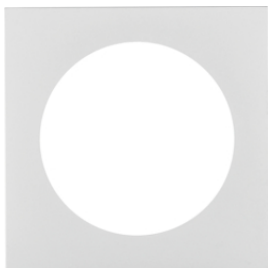
Description	P.U.	Cat ref.
Frame 1gang, Integro Pure, black glossy	10	919752510
Frame 2gang, Integro Pure, black glossy	2	919762510
Frame 3gang, Integro Pure, black glossy	2	919782510
Frame w. hing. cover, Flow/Pure, bl. gl.	10	918282510



919752545

Frame, granite black, silk matt, lacquered

Description	P.U.	Cat ref.
Frame 1g, Pure, granite black, silk matt	10	919752545
Frame 2g, Pure, granite black, silk matt	2	919762545
Frame, hing. cov, Flow/Pure, black, silk	10	918282545



919752528

Frame, chrome matt galvanised

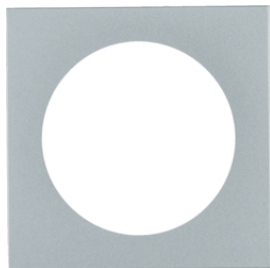
Description	P.U.	Cat ref.
Frame 1gang, Pure, chrome matt, galv.	10	919752528
Frame 2gang, Pure, chrome matt, galv.	2	919762528
Frame 3gang, Pure, chrome matt, galv.	2	919782528
Frame w. hing. cov., Flow/Pure, chrome	10	918282528



919752518

Frame, chrome glossy galvanised

Description	P.U.	Cat ref.
Frame 1gang, Pure, chrome gl., galv.	10	919752518
Frame 2gang, Pure, chrome gl., galv.	2	919762518
Frame w. hing. cov., Flow/Pure, chrome	10	918282518

**Frame, stainless steel matt, lacquered**

Description	P.U.	Cat ref.
Frame 1g, Pure, stainl. steel mat, lacq.	10	919752524
Frame 2g, Pure, stainl. steel mat, lacq.	2	919762524

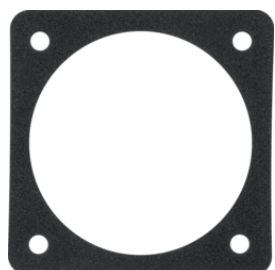
919752524



91820

Contact protection boxes

Description	P.U.	Cat ref.
WALL BOX GREY MOBIL R	200	91820
WALL BOX MOBIL R	200	91883
WALL BOX 2GANG VERTICAL	100	91911
WALL BOX 3GANG	10	91933
WALL BOX WITHOUT CABLE CL	200	9182002
WALL BOX 2GANG HORIZONTAL	100	9191201
WALL BOX 3GANG	10	9191502



91853

Sealing set

Description	P.U.	Cat ref.
SEALING B.MOBIL	10	91853